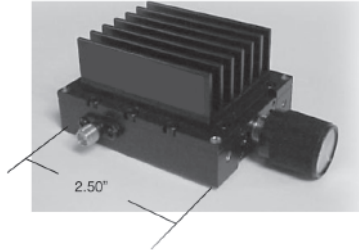




Variable Attenuators Components

HIGH POWER VARIABLE ATTENUATORS



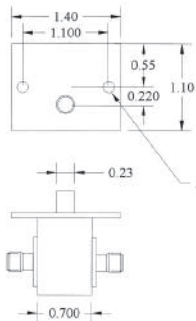
30 WATTS*

RF CONN: SMA female
INS LOSS: 0.5dB max
VSWR: 1.5 max
RF POWER: 30 W avg
5 Kw peak

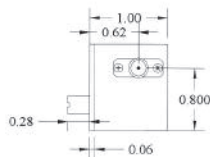
*Up to 250 Watts Available

| Freq. (GHZ) | Atten. Range (dB) | Flatness (+/- dB) | Model No. |
|-------------|-------------------|-------------------|--------------|
| 0.5 - 1.0 | 6 | N/A | HPA-1-0.5 |
| 0.8 - 1.6 | 10 | N/A | HPA-1.6-0.8 |
| 0.9 - 1.75 | 10 | N/A | HPA-1.75-0.9 |
| 1.0 - 2.0 | 10 | N/A | HPA-2-1 |
| 2.0 - 4.2 | 10 | N/A | HPA-4.2-2 |
| 4.0 - 8.0 | 20 | N/A | HPA-8-4 |
| 7.9 - 12.7 | 20 | N/A | HPA-12.7-7.9 |
| 11.7 - 18.0 | 20 | N/A | HPA-18-11.7 |

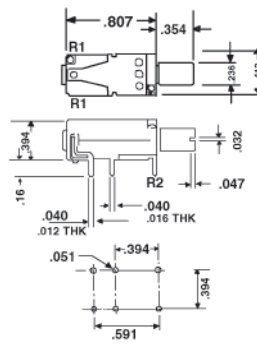
DC - 1 GHz VARIABLE ATTENUATORS



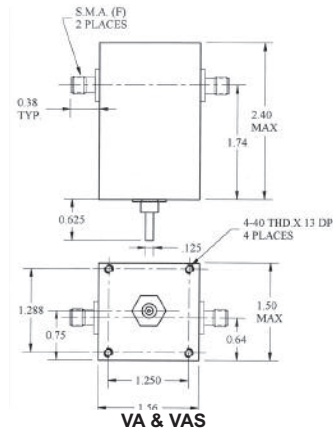
VA Series



Dial Option*



VAPC Series



VA & VAS

*Multi-Turn, SMA Connectors, Low Insertion Loss

| Freq (MHz) | Atten (dB) | I.L. (dB max) | Flatness (+/- dB) | VSWR (max) | Model No. (50 Ohm) | Model No. (75 Ohm) |
|------------|------------|---------------|-------------------|------------|--------------------|--------------------|
| DC-100 | 0-15 | 0.5 | 0.5 | 1.3 | VA100-15 | VA100-15/75 |
| DC-200 | 0-15 | 0.5 | 0.5 | 1.4 | VA200-15 | VA200-15/75 |
| DC-500 | 0-15 | 0.5 | 1.0 | 1.5 | VA500-15 | VA500-15/75 |
| DC-1000 | 0-10 | 1.0 | 1.5 | 1.7 | VA1000-10 | N/A |

PC Mounted

| | | | | | | |
|--------|------|-----|-----|-----|---------------|-------------|
| DC-300 | 0-15 | 0.5 | 1.0 | 1.5 | VAPC300-15-50 | VAPC2-15-75 |
| DC-850 | 0-15 | 0.5 | 1.5 | 2.0 | VAPC850-15-75 | VAPC-15-50 |

*Single-Turn, SMA Connectors, Low Insertion Loss

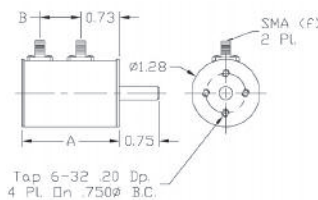
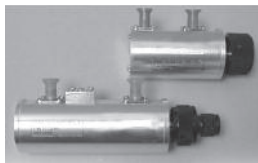
| Freq (MHz) | Atten (dB) | I.L. (dB max) | Flatness (+/- dB) | VSWR (max) | Model No. (50 Ohm) | Model No. (75 Ohm) |
|------------|------------|---------------|-------------------|------------|--------------------|--------------------|
| DC-100 | 0-30 | 1.0 | 1.0 | 1.5 | VA100-30 | VA100-30/75 |
| DC-200 | 0-30 | 1.0 | 1.5 | 1.5 | VA200-30 | VA200-30/75 |
| DC-500 | 0-30 | 1.0 | 1.5 | 1.5 | VA500-30 | VA500-30/75 |
| DC-1000 | 0-30 | 3.0 | N/A | 1.8 | VA1000-30 | N/A |

Single-Turn, SMA, Low Insertion Loss, w/Calibration Dial

| | | | | | | |
|--------|------|-----|-----|-----|-----------|-------------|
| DC-100 | 0-30 | 1.0 | 1.0 | 1.5 | VAS100-30 | VA050-30/75 |
| DC-200 | 0-30 | 1.0 | 1.5 | 1.5 | VAS200-30 | VA051-30/75 |
| DC-500 | 0-30 | 1.0 | 1.5 | 1.5 | VAS500-30 | VA052-30/75 |

*For Turns Counting Dial change P/N from VA to VAF

ROTARY STEP ATTENUATORS



| Model | Frequency Range | Attenuator Range | Attenuation Accuracy | VSWR | Insertion Loss | Dim (In) A | Dim (In) B |
|---------------|-----------------|------------------------|----------------------------------------------------------------------------------------------------------------------------------|-----------------------------------------------------------------------------------------|-------------------------------------------------------------|------------|------------|
| RSA2200-10-1 | DC-2200 MHz | 0-10 dB in 1 dB steps | ±2 dB max. DC-1000 MHz ±4 dB max. 1000-2000 MHz | 1.2:1 max. DC-1000 MHz 1.4:1 max. 1000-2000 MHz | 0.2dB max DC-1000 MHz 0.4 dB max. 1000-2000 MHz | 1.83 | 0.77 |
| RSA2200-60-10 | DC-2200 MHz | 0-60 dB in 10 dB steps | ±0.5 dB or 1% DC-500 MHz ±0.5 dB or 2% 500-1000 MHz ±0.5 dB or 3% 1000-2000 MHz | 1.2:1 max. DC-1000 MHz 1.4:1 max. 1000-2000 MHz | 0.3 dB max. DC-1000 MHz 0.5 dB max. 1000-2000 MHz | 2.40 | 1.36 |
| RSA2200-110-1 | DC-2200 MHz | 0-110 dB in 1dB steps | ±0.3 dB or 1% DC-500 MHz ±0.5 dB or 2% 500-1000 MHz ±0.5 dB or 3% 1000-1500 MHz ±0.5 dB or 4% 1500-2000 MHz | 1.3:1 max. DC-1000 MHz 1.5:1 max. 1000-1500 MHz 1.7:1 max. 1500-2000 MHz | .75 dB max. DC-1000 MHz 1.25 dB max. 1000-2000 MHz | 4.0 | 2.3 |

• Impedance: 50 Ohms

• RF Input Power: 1W avg., 1KW peak

• SMA Female Others Available

INSTRUMENTS FOR INDUSTRY INC.

IFI 中国总代理: 北京康泰电子有限公司

Tel: 8610-58731155

Email: sales@quatronix-cn.com

www.ifi.com (英文) www.quatronix-cn.com (中文)